



CLEAR
LED™

DIGITAL LED FILM SERIES

TRANSPARENT LED FILM DISPLAY





CLEARLED DIGITAL LED FILM

ADHESIVE TRANSPARENT LED SCREEN

3mm THICKNESS

1 lbs. PER MODULE

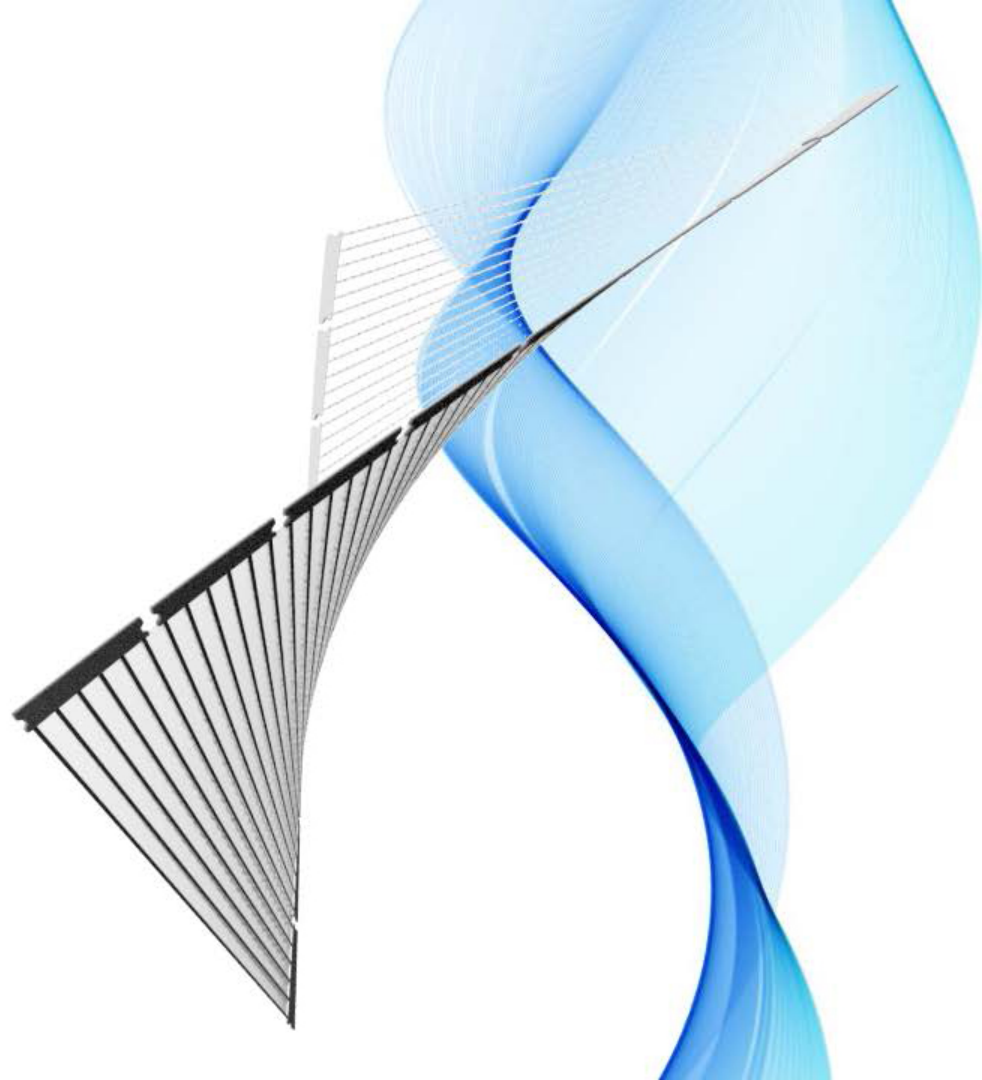
60%~80% TRANSPARENCY

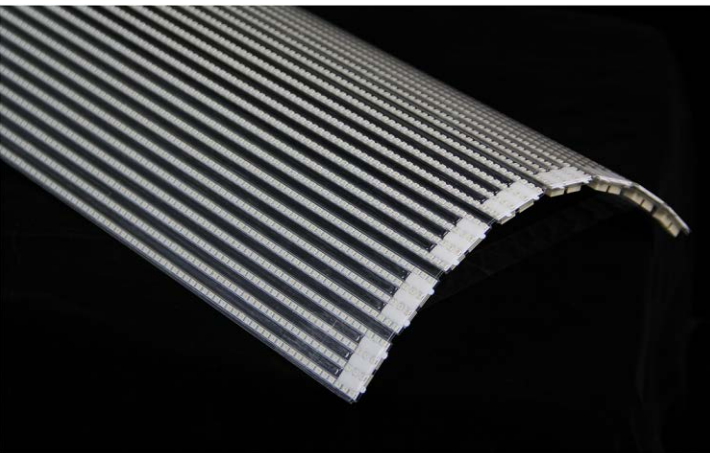
6000+ nits BRIGHTNESS

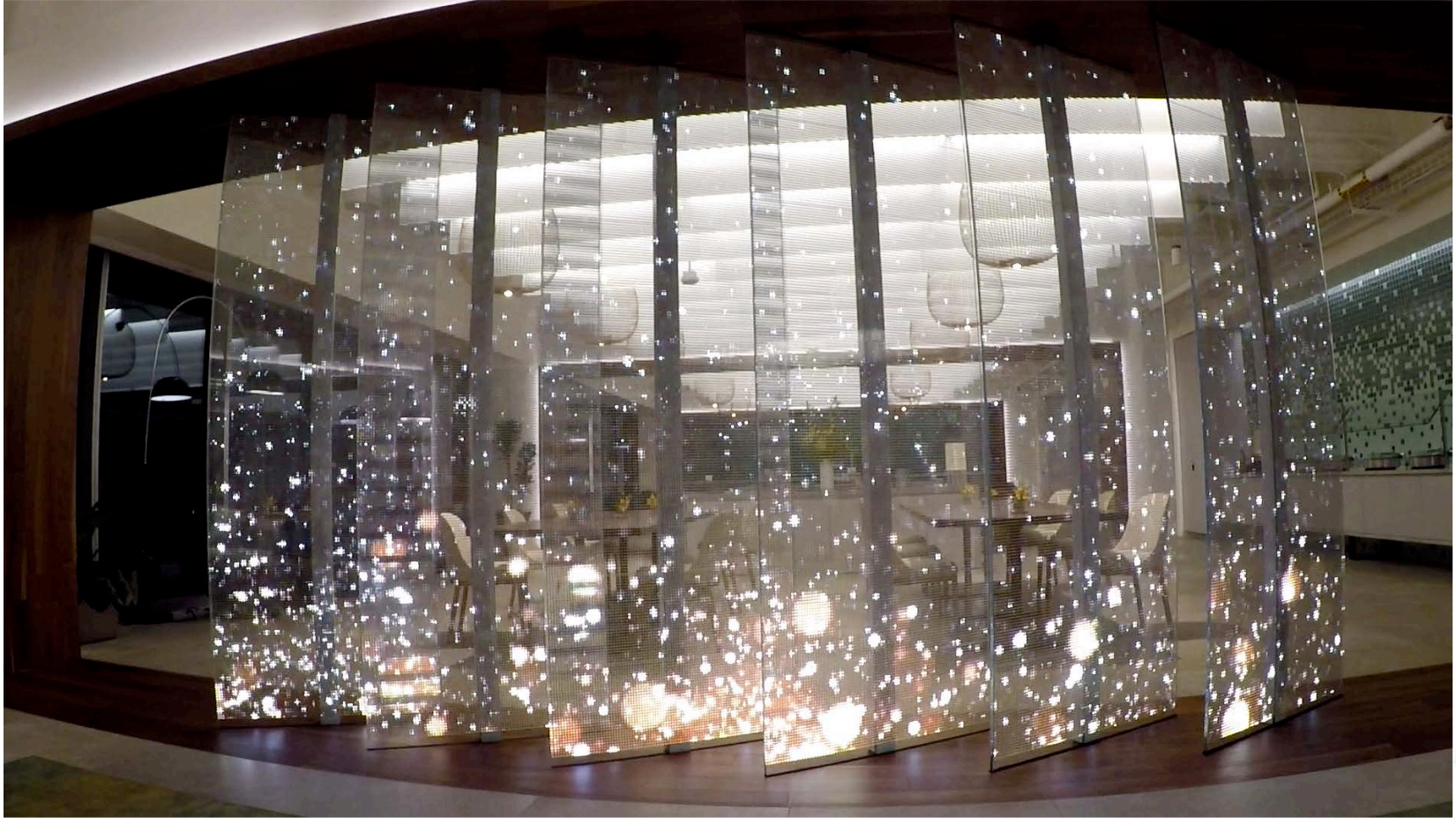
6~20 mm PIXEL PITCH

2 YEARS WARRANTY

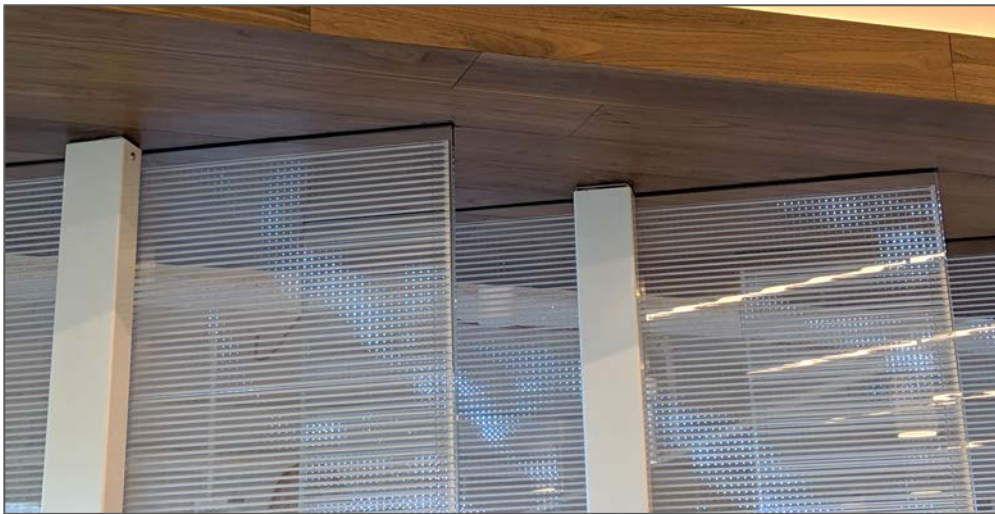
100,000 HOURS LIFETIME

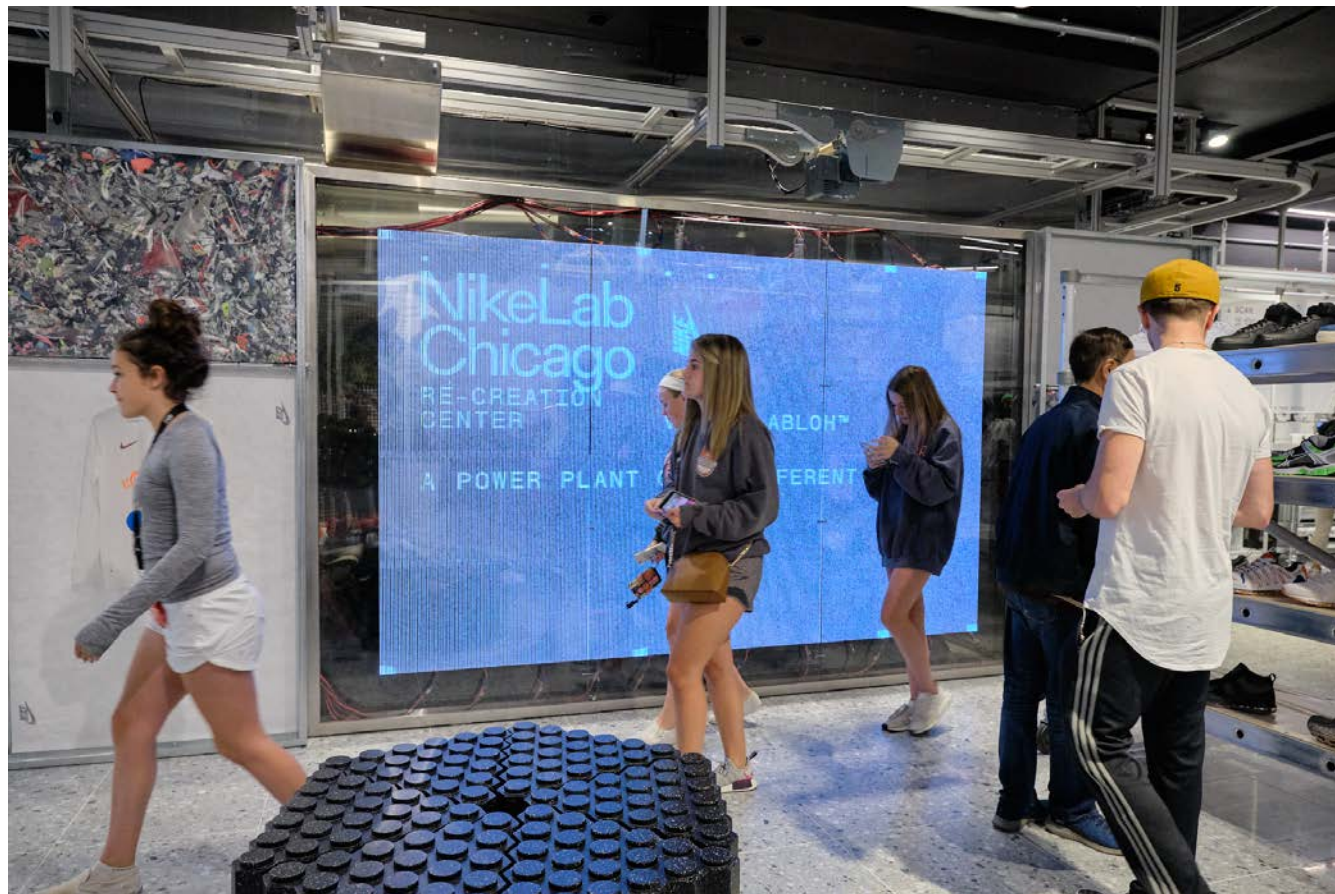


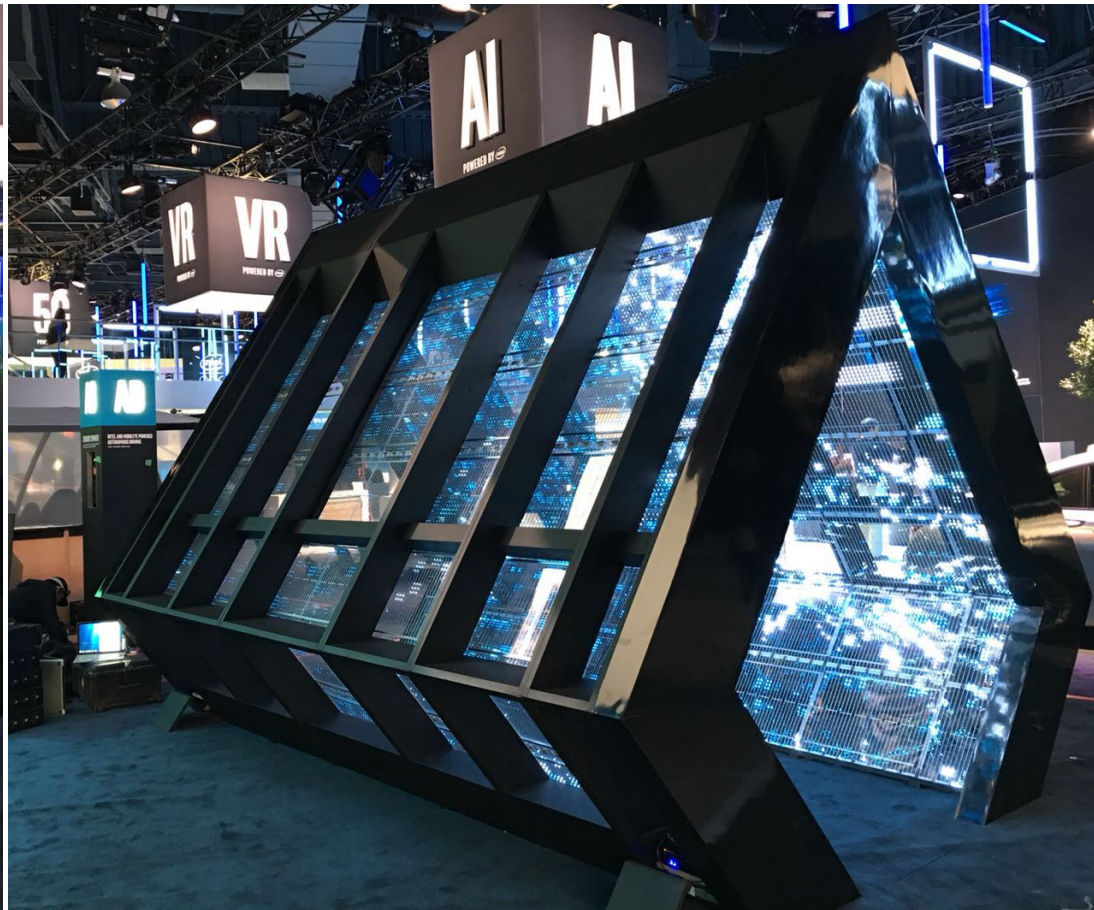
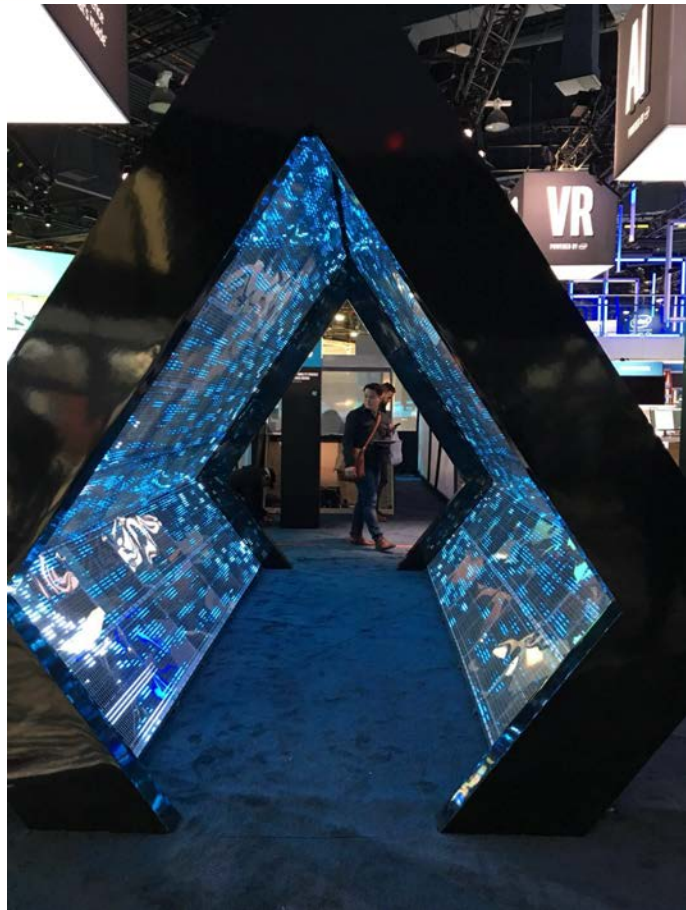












Product Model	DLF6.5	DLF10	DLF16	DLF20	DLF20x40
Pixel Pitch (mm)	6.5	10	16	20	20 x 40
Module Size (mm)	L(480mm*1/2/3) x W(208mm)	L(480mm*1/2/3) x W(320mm)	L(480mm*1/2/3) x W(256mm)	L(480mm*1/2/3) x W(320mm)	L(480mm*1/2/3) x W(400mm)
Pixel Density(dot/m ²)	23,670	10,000	3,906	2,500	1,250
Transparency	65%	75%	85%	83%	92%
Weight (kg/m ²)	3.5				
Thickness	3mm / 0.11 inch				
Suitable Viewing Distance (ft)	>21'	>33'	>55	>65'	>130'
Brightness (nits)	6000	6000	6000	5500	4000
Viewing Angle (degree)	160/160				
Refresh Rate (Hz)	8,000				
Max. Power Cons. (W/m ²)	750	650	650	550	280
Avg. Power Cons. (W/m ²)	250	210	210	180	90
Operating Temperature Range (°C)	-20°C ~ 55°C				
Operating Humidity Range (°C)	-25°C ~ 75°C				
Minimum installation space (mm)	> 100 mm (>4")				
Suggested Installation Methods	Adhesive if required brightness is less than 1000nits Hanging if required brightness is 1000 nits or higher				

OUR SERVICES



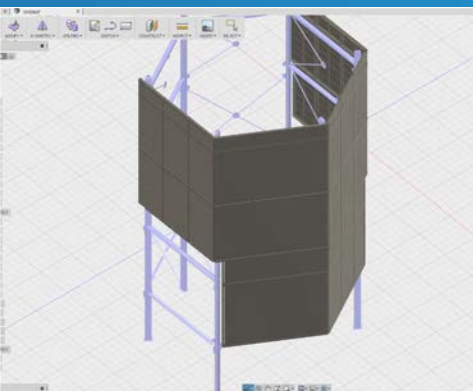
SOFTWARE CONTROL
& MONITORING



INSTALLATION
& SERVICES

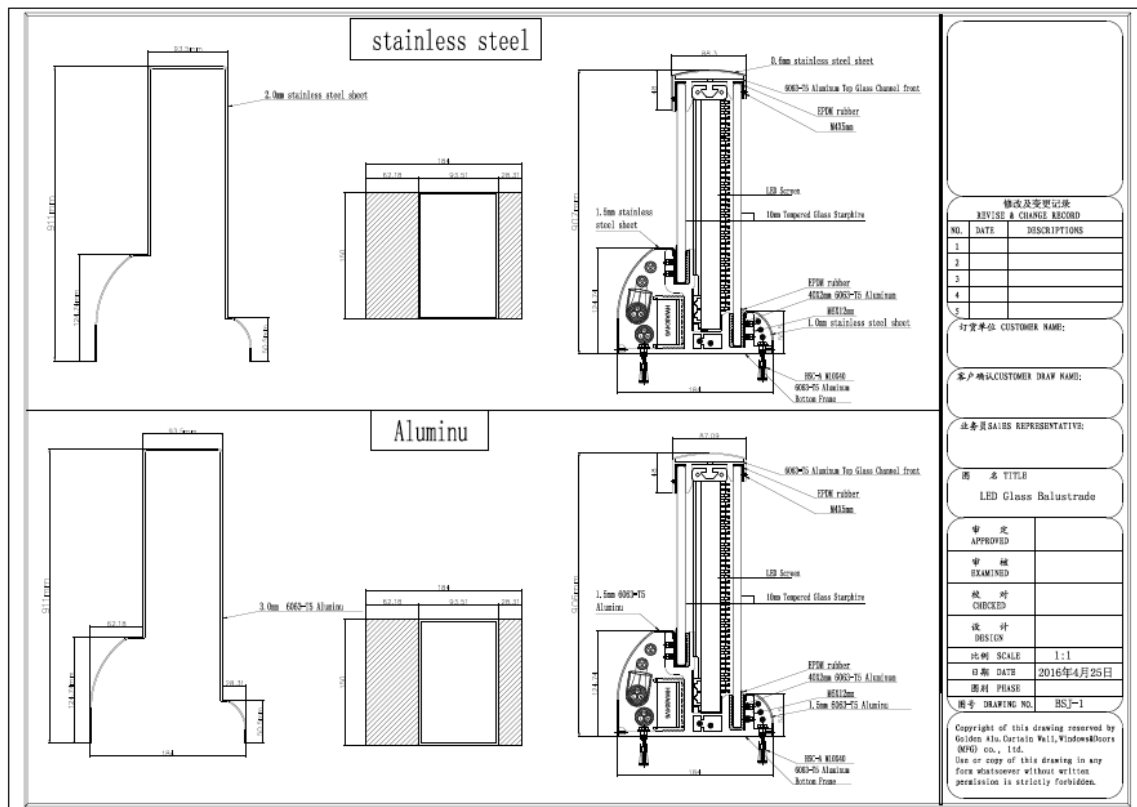
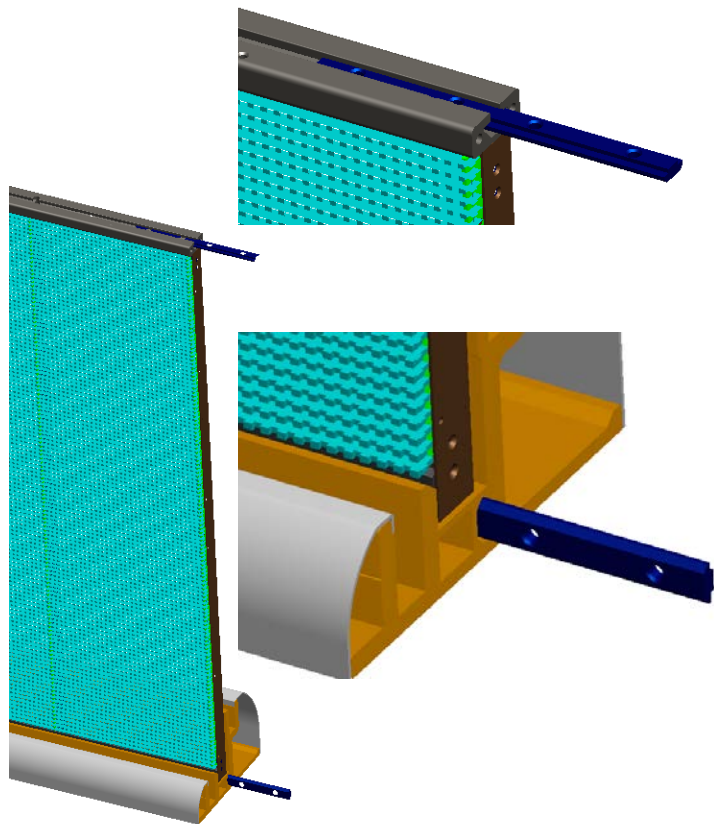


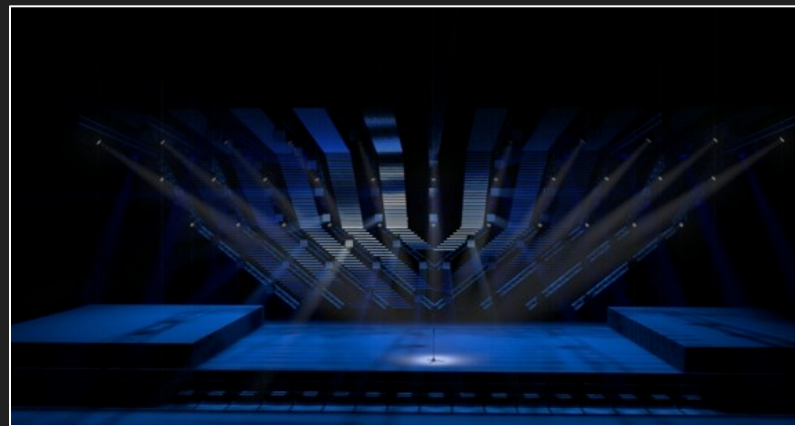
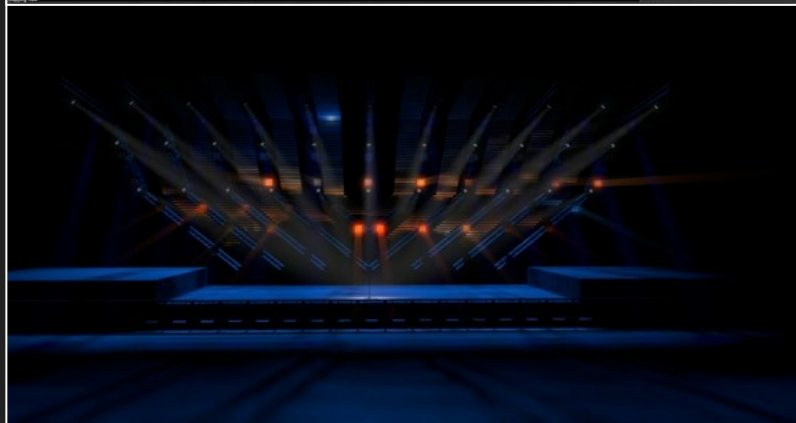
DESIGN & ENGINEERING

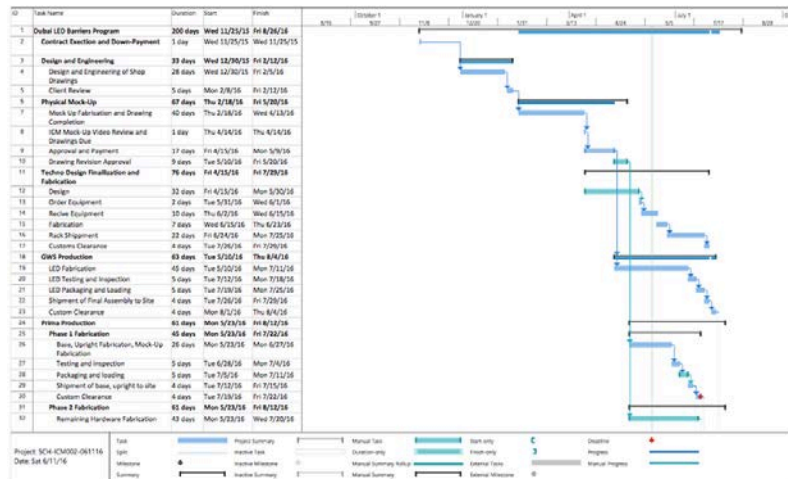


MANUFACTURING











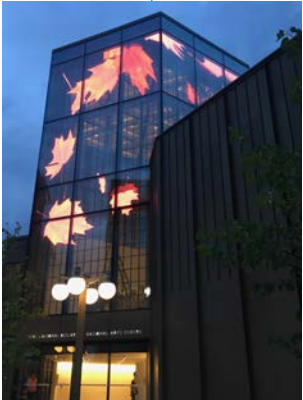
WORLD WIDE SERVICE AND SUPPORT

- We provide services and technical support across North America
- Focusing on high quality and reliable product and services



WORLD'S LEADING TRANSPARENT LED & MEDIA FACADE SOLUTION PROVIDER

- ClearLED is the inventor and manufacturer of the world's leading transparent LED displays.
- Company has presence in US, Canada and China
- ClearLED transparent displays are trusted by leading brands around the globe to get you noticed. Our display solution is sleek, lightweight, and modular. Our goal is to design and deliver unique, high impact digital experience.





MANGO



NINE WEST



SAMSUNG



ZARA



PRIMARK®



CIRQUE DU SOLEIL.





CLEARLED™

1.778.373.5701

info@clearled.com

clearled.com

youtube.com/clearled